



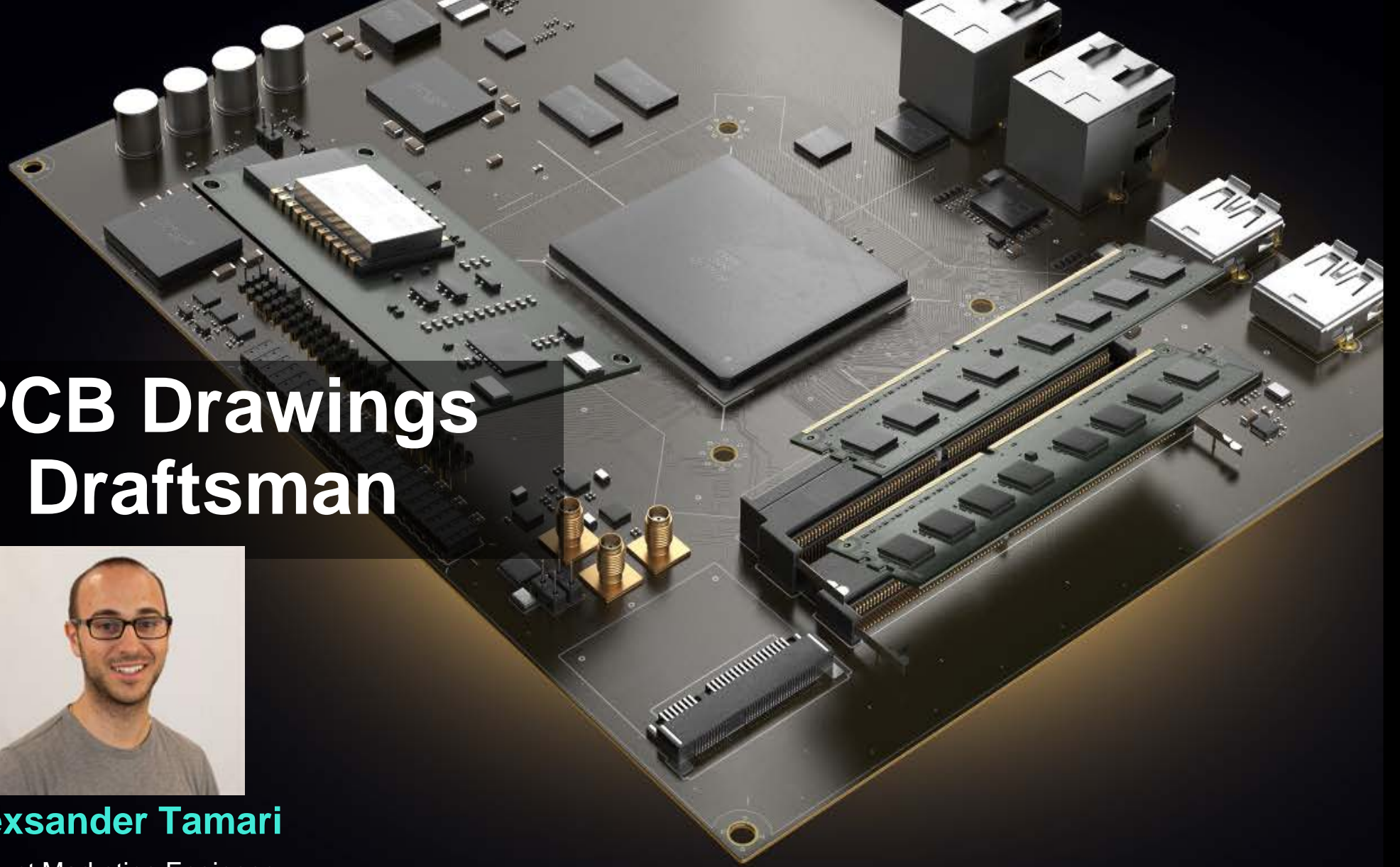
ALTIUM
DESIGNER

Easy PCB Drawings With Draftsman



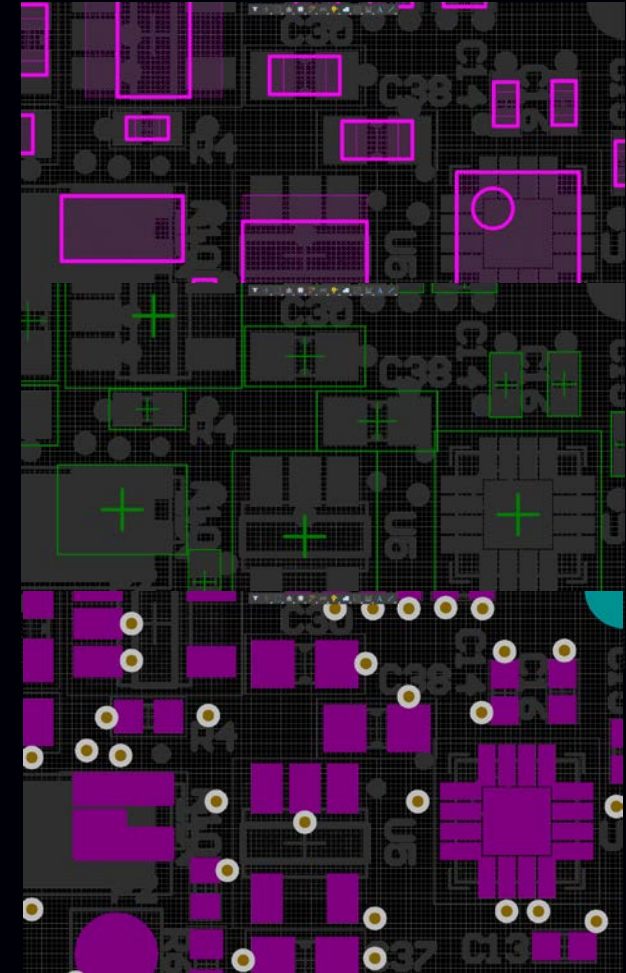
Alexander Tamari

Product Marketing Engineer



1. Problems with Fab/Ass Drawings
2. What is Draftsman?
3. Drawing Workflow In Draftsman
5. Demo
6. Questions & Answers

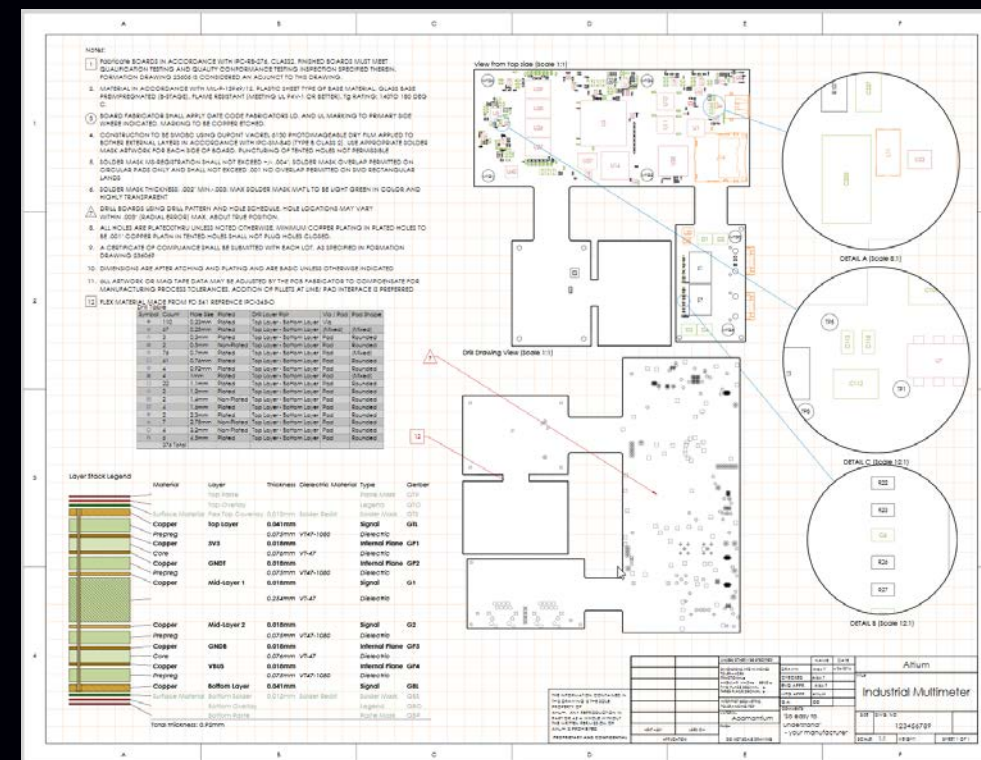
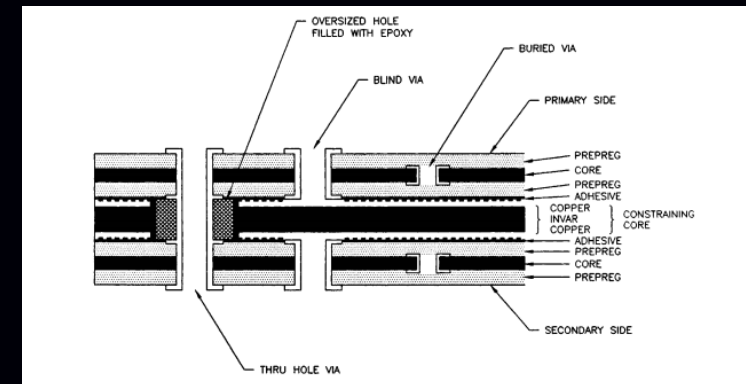
- Many layers
 - Adds clutter to workspace
 - Slows tool with addition design data
- Export to Mechanical Tool
 - New tool / Context switching
 - Import/Export
 - Time consuming changes
 - No electrical intelligence



Altium | What is Draftsman



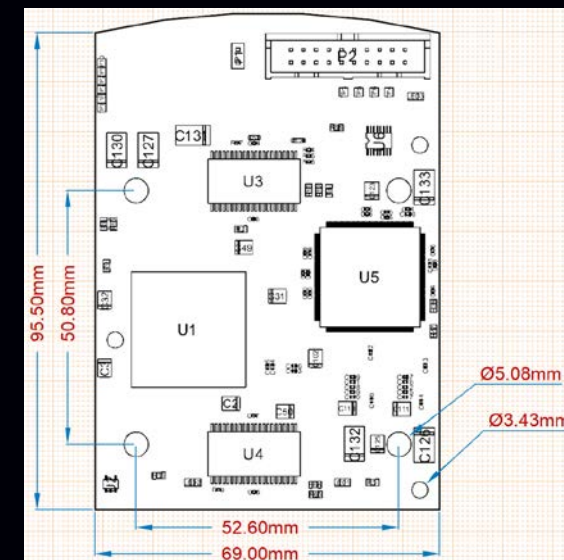
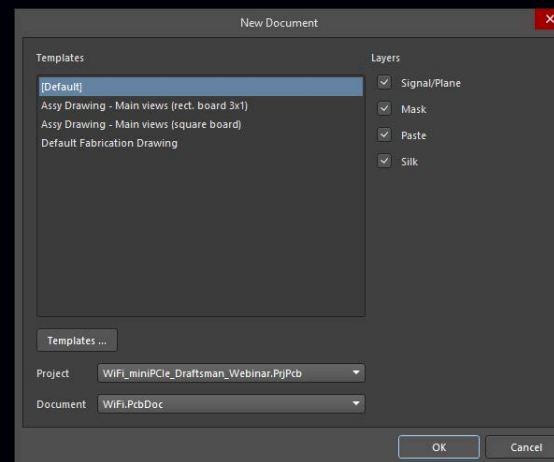
- Professional
 - Developed with ISO and IPC standards in mind
- Quick
 - Fast placement of drawings, notes, callouts...
- PCB Driven
 - In Altium Designer environment
 - No import/export
- What you see is what you get
 - Export to PDF
- Automated
 - Templates



- Create Drawing File
 - Blank
 - Template

- Place Graphical Information
 - Assembly
 - Fabrication
 - Layer stack
 - Drill Drawing

- Place Numerical & Written details
 - Notes
 - Callouts
 - Dimension



Material	Layer	Thickness	Dielectric Material	Type	Gerber
	TopPaste			Paste Mask	GTP
	TopOverlay			Legend	GTO
Surface Material	TopSolder	0.03mm	Solder Resist	Solder Mask	GTS
Copper	TopLayer	0.05mm		Signal	GTL
Core		0.36mm	FR-4	Dielectric	
Copper	int1_power	0.04mm		Signal	G1
Prepreg		0.36mm	FR-4	Dielectric	
Copper	int2_gnd	0.04mm		Signal	G2
Core		0.36mm	FR-4	Dielectric	
Copper	BottomLayer	0.05mm		Signal	GBL
Surface Material	BottomSolder	0.03mm	Solder Resist	Solder Mask	GBS
	BottomOverlay			Legend	GBO
	BottomPaste			Paste Mask	GBP
Total thickness: 1.30mm					

- Notes:
- 1 Fabricate boards in accordance with IPC-RB-276, Class 3. Finished boards must meet quality conformance testing and inspection as specified.
 2. Material in accordance with MIL-S-13949/4, laminated sheet, HTE copper-clad, type GF glass clothbase, flame resistant (meeting UL 94V-1 or better). Tg rating: 140 to 160°C.
 - 3 Material in accordance with MIL-S-13949/12, plastic sheet, type GF base material, glass base prepregged (B-stage), Tg rating: 140 to 160°C.

Altium | DEMO



DEMO

Upcoming Webinars

Title	When
Altium Designer 18: High Performance Made Simple	Aug 23, 2018 10:00 AM Pacific Time
Altium Designer 18: Key Benefits of Active BOM	Aug 28, 2018 10:00 AM Pacific Time

Additional comments, questions, or concerns

Alexander.Tamari@altium.com