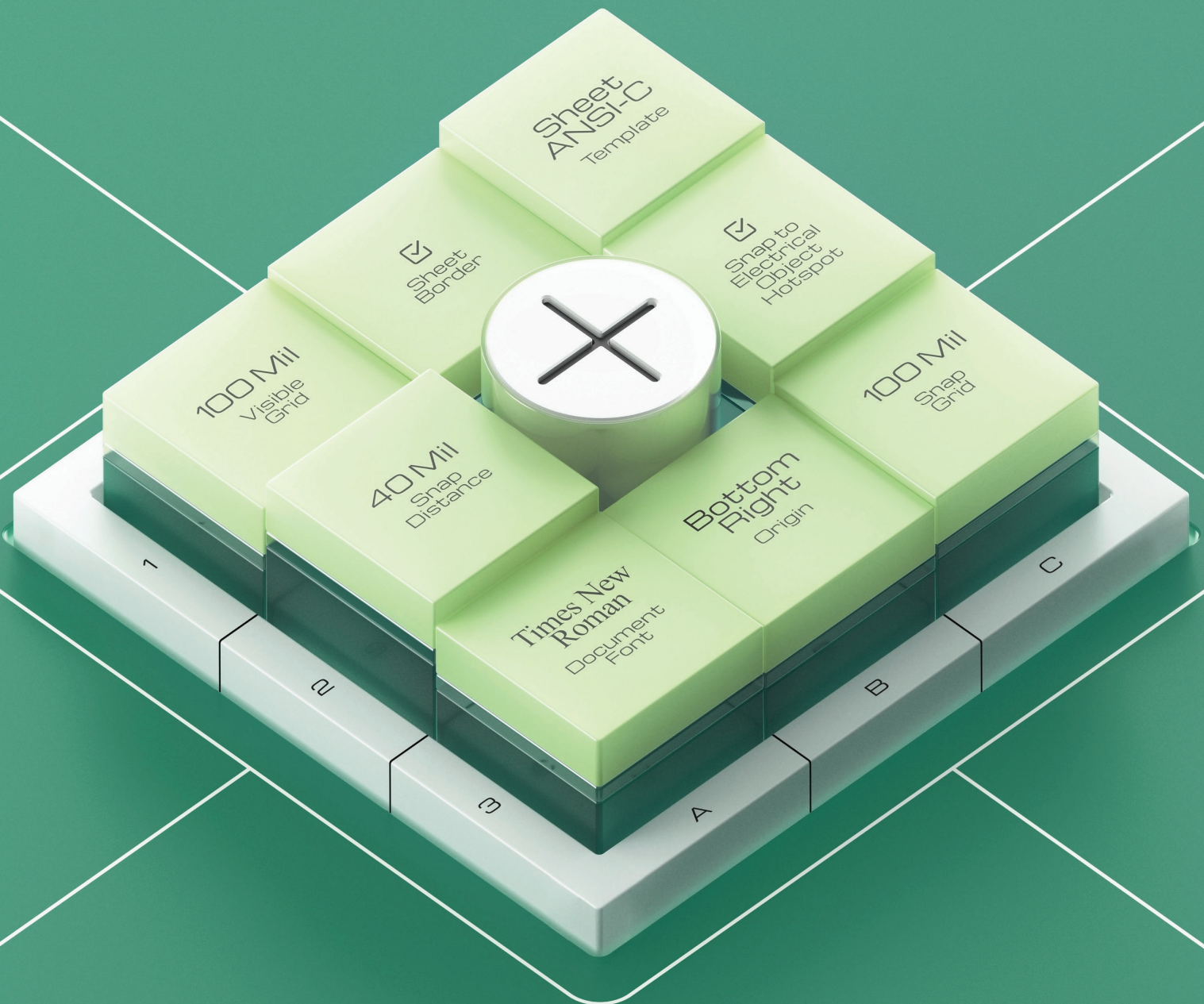


Altium

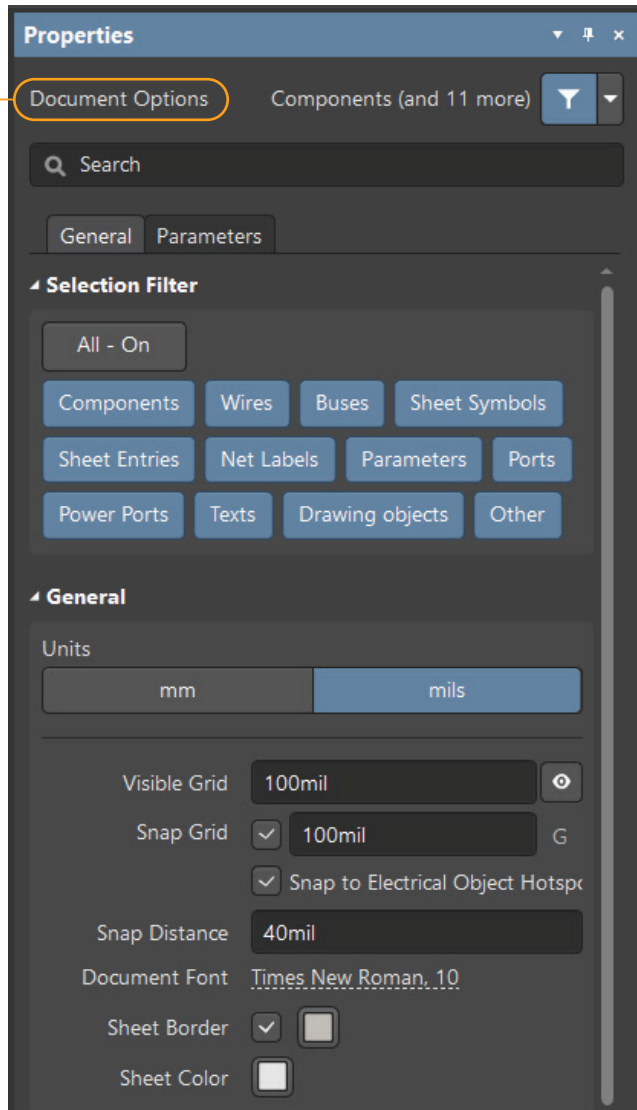
QUICK GUIDE

Properties panel document options in SCH editors



Summary

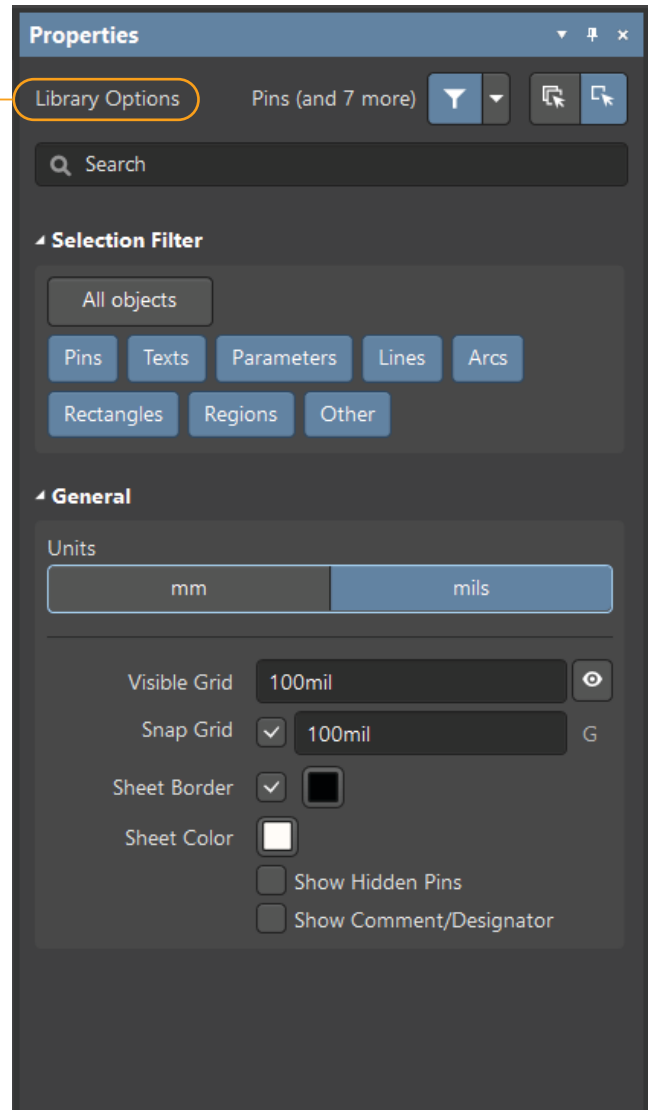
For the Schematic Editor, the Document Options in the Properties panel will be displayed for the active sheet when no objects are selected on the sheet.



SCH Editor

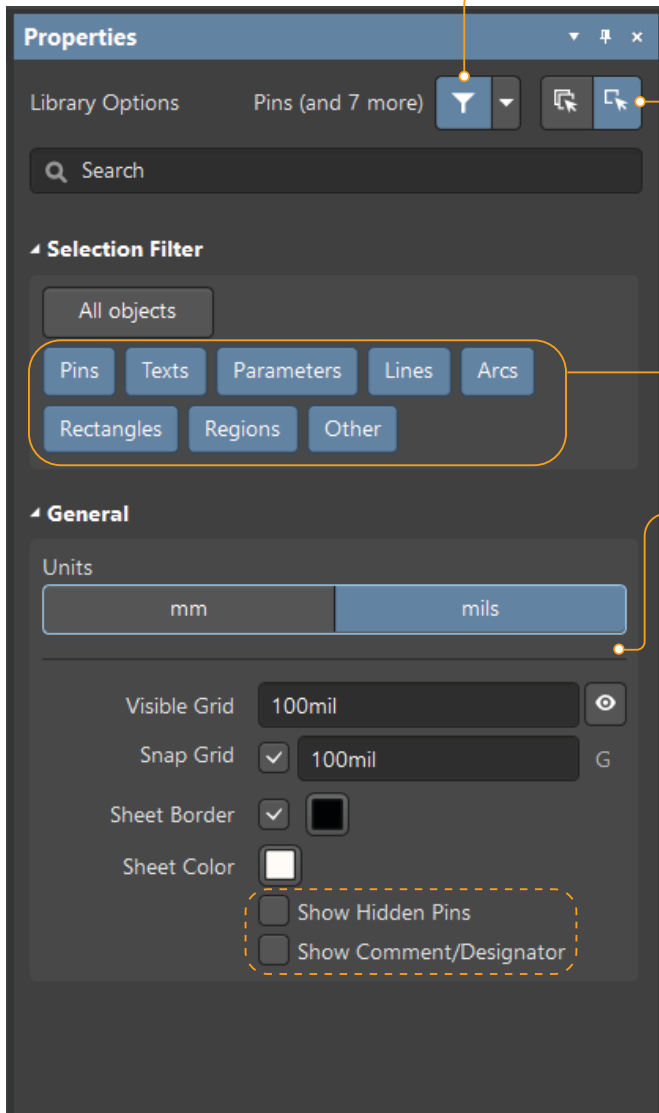
Document options are used to customize the grid, fonts, sheet format, and more. You can access them in the **Properties** panel.

In an opened SCH Library file, the Document Options (Library Options) will be displayed after selecting the **Tools > Document Options** command.



SCHLIB Editor

Document options in a SCH library



Post filter - when selecting many different primitives, you will be able to display the properties of individual types of primitives included in this filter.

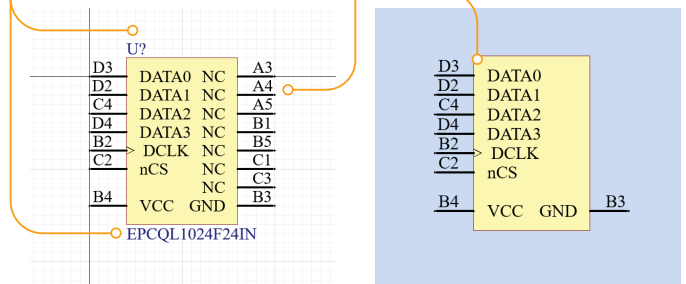
If any primitives have been selected in all components of the library (for example, through the **Find Similar Objects** command), then you can switch to displaying the properties of only current component primitives.

The **Selection Filter** is used to define which objects can be selected.

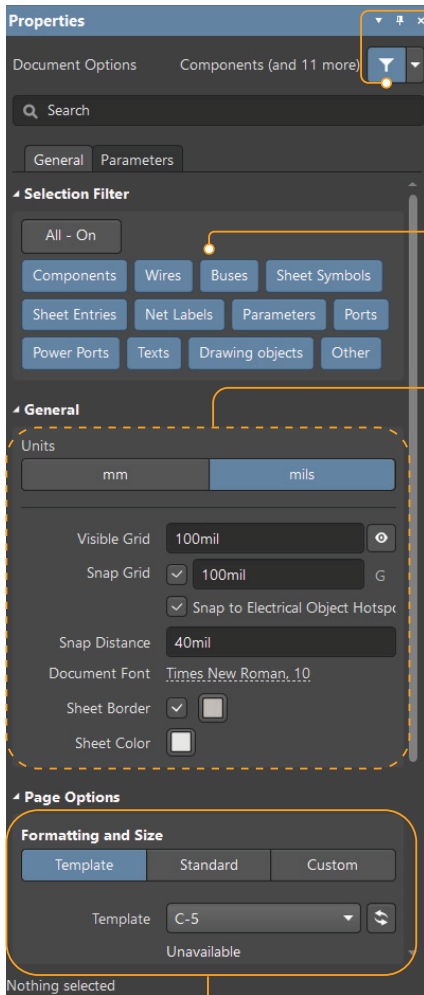
Select the required units, adjust the visible grid and color of the sheet. Set the snap grid for precise placement of primitives.

Comment/Designator

Hidden Pins



Document options in the SCH editor

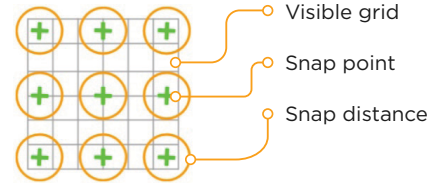


Post filter

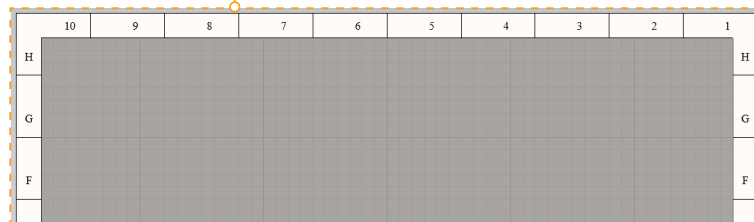
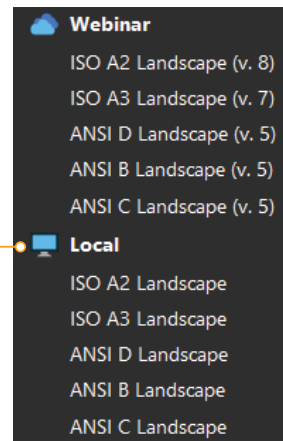
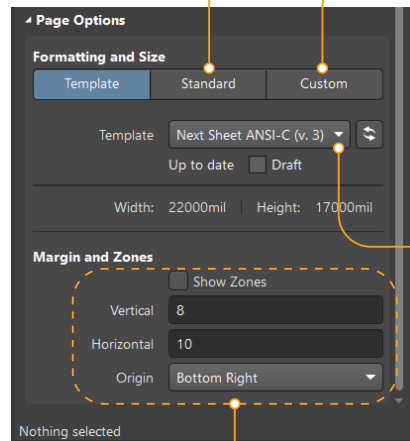
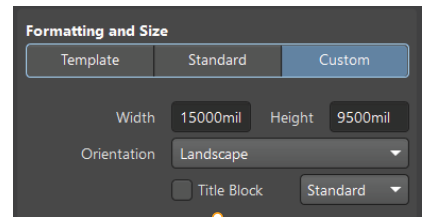
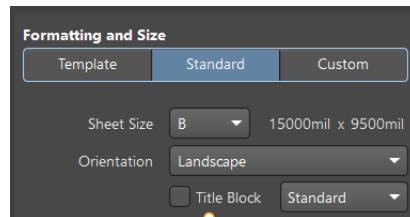
The **Selection Filter** is used to define which objects can be selected.

General section: set the required units, the visible grid, document font and sheet color.

Set the Snap Distance at which the cursor will automatically snap to the anchor point.

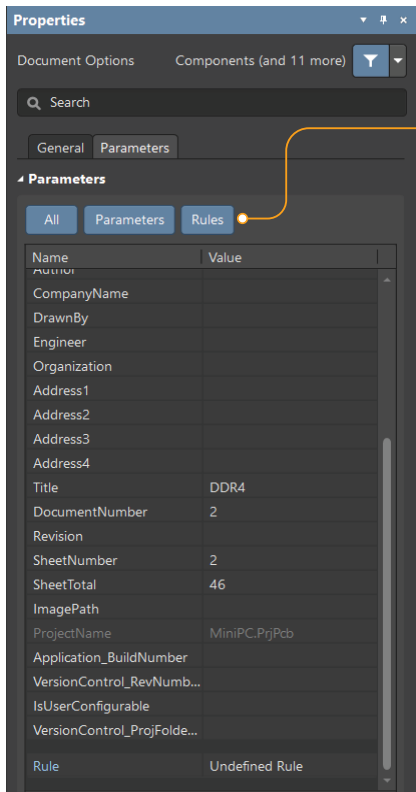


PAGE OPTIONS



Document options in the SCH editor

PARAMETERS TAB



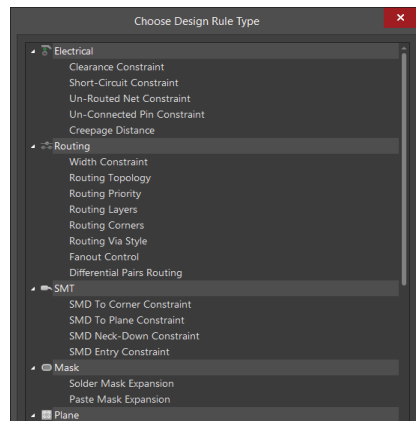
The **Parameters** tab contains a set of system parameters, template parameters, as well as user-added parameters that you can use on the sheet. In addition, you can add design rules for your PCB file.

Use a filter to customize the contents of the table.

Example of using a system parameter:

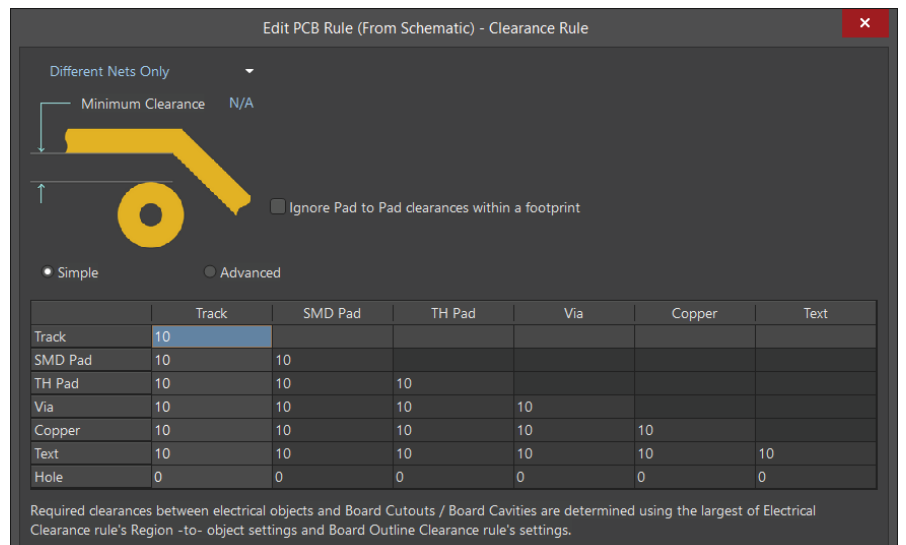
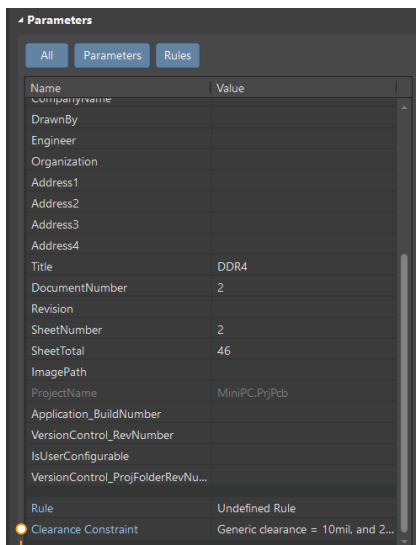
The **=ProjectName** string used on the sheet is automatically converted to the name of the current project.

Adding design rules to a sheet:



Add rule

Select rule



Set up rule