

# Modern User Interface

A modern UI isn't just to look nice, it serves a purpose

## Tool vs Designer

Have you ever spent hours fighting with your software trying to do one single simple task?

You're not alone, many users share in this frustration of having to deal with old, cluttered, and confusing user interfaces. Eventually, after hours of hitting your head on your desk and even more time dealing with support or researching online you figure it out and develop a tedious workaround, but is that pain really worth it?

## How This Affects You

A poorly designed user interface can have a huge impact on you, your work, and your work-life balance. How many times have you had to redo hours of work because a single design change was made? Or wasted half a day trying to figure out how to get a simple yet necessary feature to work? Whatever the problem, the results are the same. You're delaying other tasks, creating complicated workarounds, even missing critical design milestones.

Designing electronics should be challenging, rewarding, and yes, even fun. But when your tools work against you, instead of with you, that process is torture. A bad tool can have disastrous effects:

- Missed deadlines
- Board respins
- Lost investors/customers

These issues are not blown out of proportion. A single board respin can bankrupt a small and even medium-size business. PCB designers can make or break a company. Even missed deadlines can cripple a project when investment comes in chunks during each milestone.

## If...

You've ever missed a design deadline or wanted to punch your computer out of frustration.

## Then...

You need to finally address the real bottlenecks and barriers to true innovation; the toolchain itself.

## What If...

What if you could go to work without having to go to battle with your design tools and rekindle your passion for electronic design? It's possible with Altium Designer.

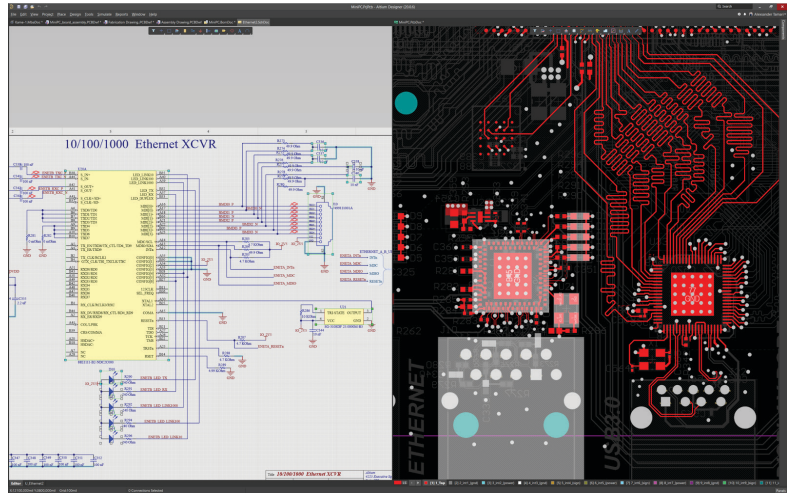
- Find what you're looking for
- Have features just work
- Be productive
- Avoid frustration
- Meet your deadlines

## What you can do.

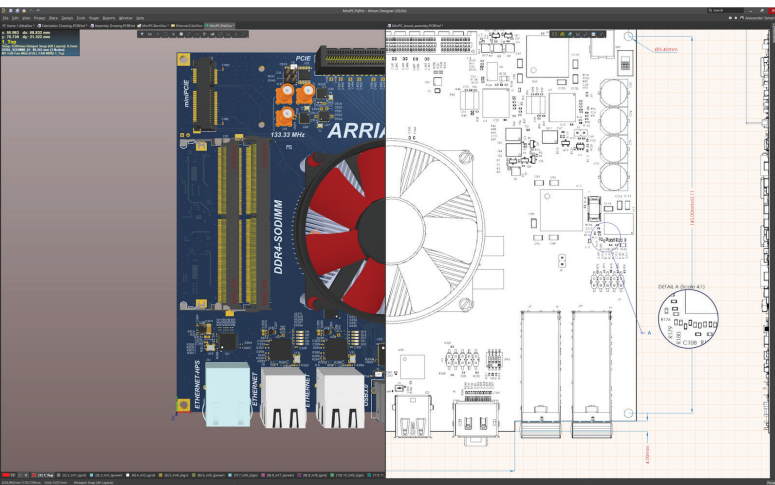
Close those 3 separate programs you use to design your PCBs and uninstall. Altium Designer has an easy, modern, and powerful user interface, intelligently designed to be consistent throughout all aspects of the design process. This means that the menus and logical arrangement of functions follow you throughout the design process allowing you to master the tool much more quickly.



It's no wonder why Altium Designer is the number one professionally used PCB design software. It is also easy to learn and master. Users that have switched see greatly improved efficiency, lower time to market, and an overall superior product and design experience.



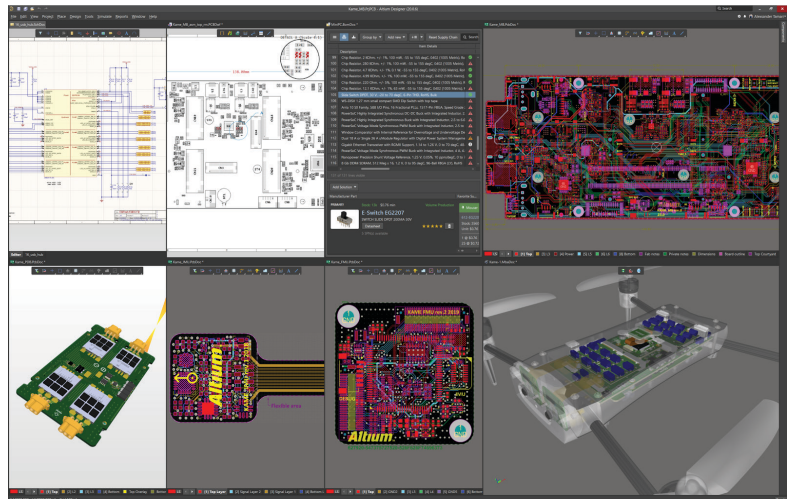
Advanced Design Insight



Complete and Professional Documentation

With a unified approach to PCB design, you can find everything you need under one roof. This is great, but the real advantage is that the design data is linked and available in every workspace, including the bill of materials, documentation, schematics, and PCB.

Design and component changes are propagated and synced to all your documents making sure you only work with up to date information. So ditch your current fragmented approach to electronics design and join the many others who have already made the switch to Altium Designer.



Completely Unified Design Environment